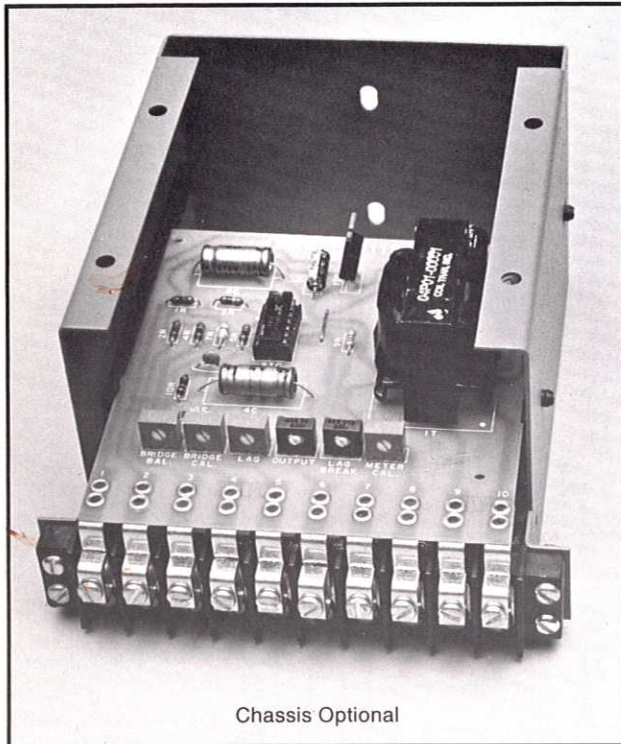


# REFLEX®

## SERIES 200 SOLID STATE CONTROLS

### MODEL 222 LOAD CELL AMPLIFIER

PART NUMBER 12M03-00115



Chassis Optional

#### GENERAL DESCRIPTION

The MODEL 222 LOAD CELL AMPLIFIER is designed for use with semi-conductor type strain gages to measure and/or control process variables such as pressure, torque, acceleration or tension. It takes its input signal from a four-leg strain gage bridge and amplifies it to a nominal ten volt DC full-scale level.

An internal strain gage bridge power supply eliminates large common mode voltages. In addition, it uses dual-band selective compensation circuitry to permit high gain and fast response at operating speeds but reduces gain at critical higher frequencies. A separate meter-driver amplifier is included to provide damped output to a 1mA DC meter.

Advanced circuit design insures a high level of accuracy, noise immunity and reliability in industrial environments. A field-proven mounting arrangement provides reliable connection, but allows easy removal without disturbing permanent wiring. Front access and detailed technical manual makes installation and service easy.

The MODEL 222 LOAD CELL AMPLIFIER can be used with other REFLEX® SERIES 200 CONTROL MODULES and POWER CONVERTERS for precise control in many applications. It is compatible with equipment of other manufacturers.

#### FEATURES

- COMPACT, SELF-CONTAINED
- MODERATELY PRICED
- HIGH PERFORMANCE
- COMPATIBLE WITH EQUIPMENT OF OTHER MANUFACTURERS
- POSITIVE, FRONT ACCESS CONNECTION
- EASILY REMOVED, REPAIRED OR REPLACED
- CONSERVATIVELY RATED FOR RELIABILITY
- DETAILED TECHNICAL MANUAL

#### TYPICAL APPLICATIONS

- TENSION INDICATION AND/OR CONTROL IN CONTINUOUS PROCESSES
- CONSTANT TENSION WINDERS

#### SPECIFICATIONS

SUPPLY: 120V AC  $\pm 10\%$   
50/60 Hz, Single Phase

AMBIENT TEMPERATURE: 0° to 40°C  
(32°-104°F) 50°C in Cabinet

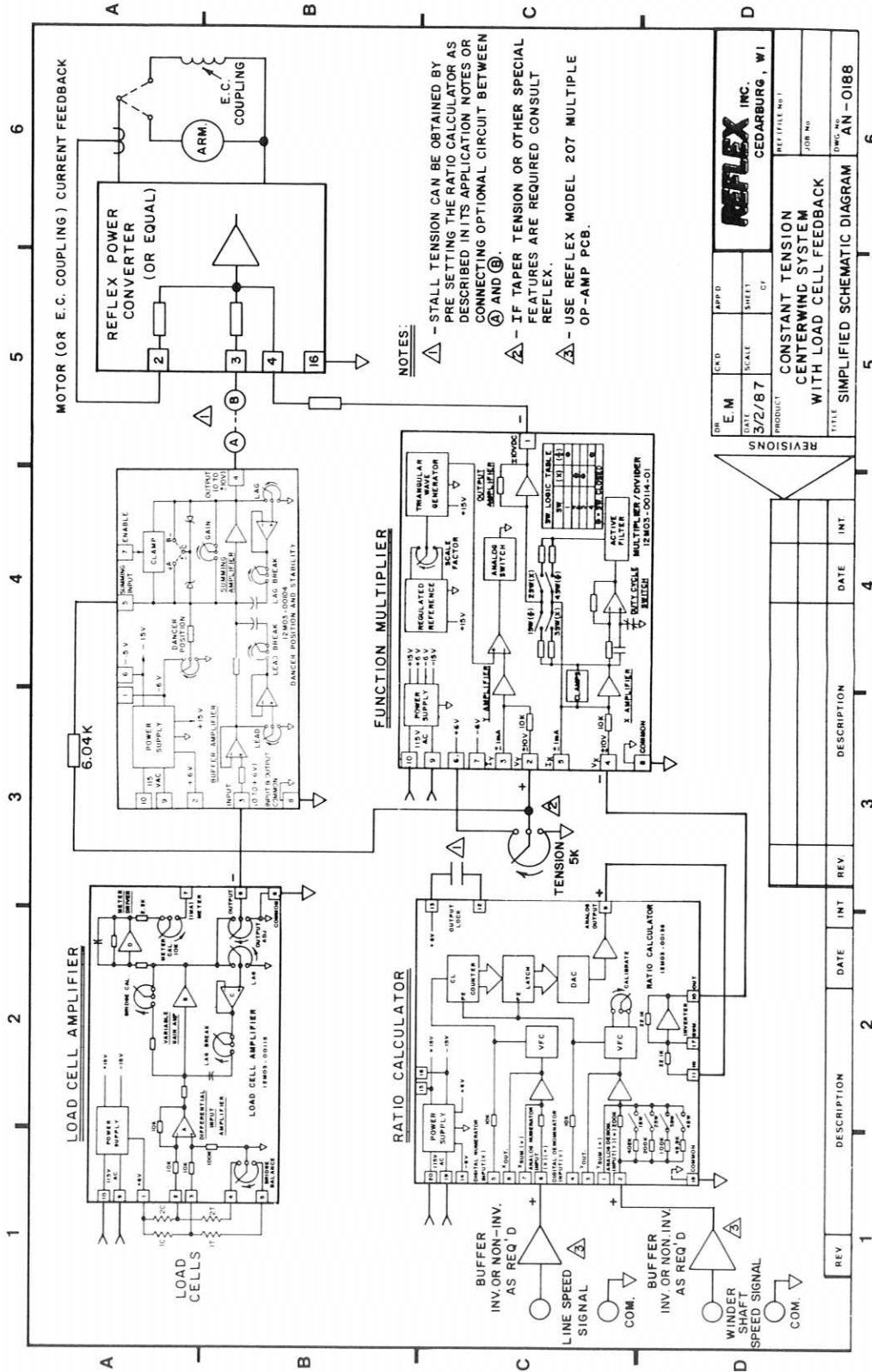
INPUT: From strain-gage bridge with 120 ohms nominal per leg. 100mV minimum input for full output with the bridge excited with 6 volts DC.

OUTPUTS: Adjustable up to  $\pm 10V$  DC @ 5mA at terminal 6.  $\pm 1mA$  to a 1mA meter at terminal 7.

ADJUSTMENTS: Bridge Balance, Bridge Calibrate, Meter Calibrate, Output Adjust, Lag, Lag Break

#### OPTIONS

- SIGNAL ISOLATOR
- COMPATIBLE WITH OTHER SERIES 200 CONTROLS (See Bulletin SB200)
- SYSTEM APPLICATION DIAGRAMS AVAILABLE



OR	E.M.	APP'D	REF. FILE NO. 1
DATE	SCALE	SHEET	OF
3/2/87			
PRODUCT	CONSTANT TENSION CENTERWIND SYSTEM WITH LOAD CELL FEEDBACK		
TITLE	SIMPLIFIED SCHEMATIC DIAGRAM		
JOB NO.	AN-0188		
DWG. NO.	6		

REV	DESCRIPTION	DATE	INT
1			
2			
3			
4			